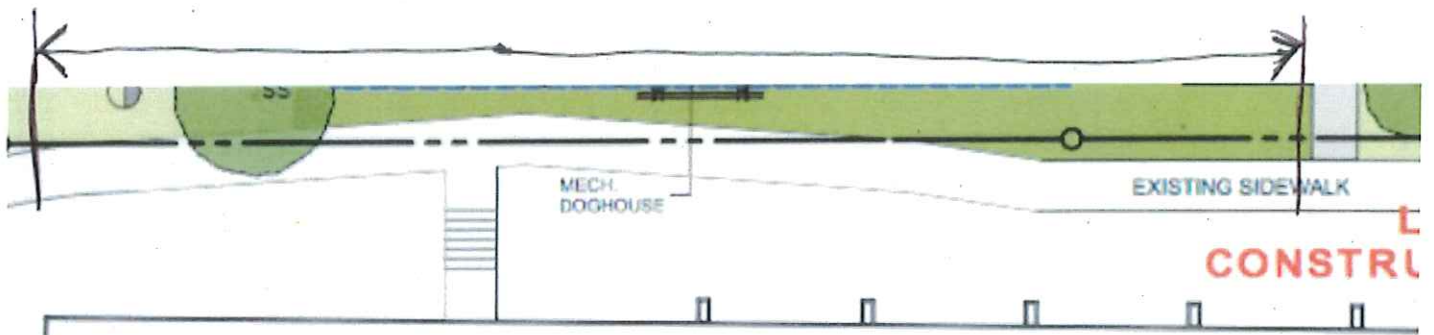


N
W E
S

Sidewalk Closed - will reopen Friday Aug 19 @ 4:00pm
since fall 2015



CHEAM
REC CENTRE

SITE

FAAP FI

EF BI

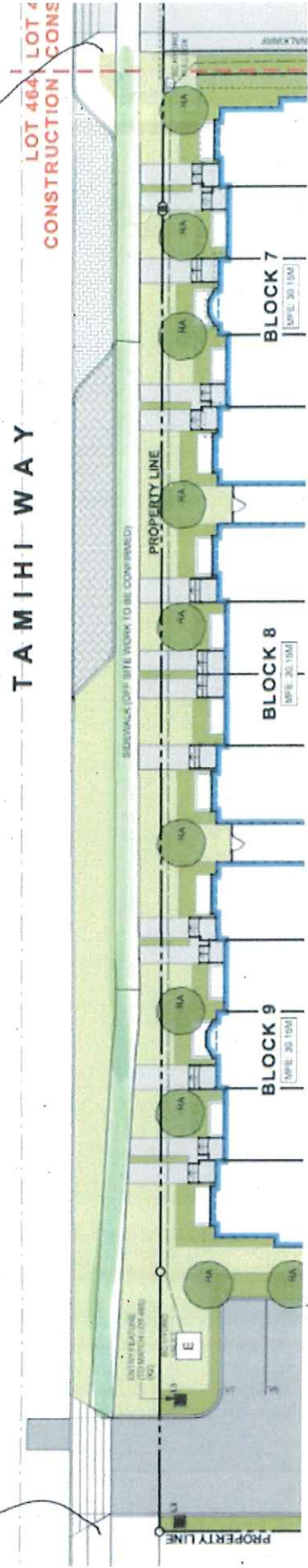
F1 42

The signs get put up daily from 7am - 4:30
Monday to Friday.

Signage noting
sidewalk closure.

Signage noting
sidewalk closure.

TAMIHU WAY



This portion will have workers / machines. Daily from now
through Feb 2017. There is a sidewalk on the north side
of Tamihu that can be used. Also people can safely cross
at intersection of Garrison Blvd + Tamihu Way.